

Stationäre Drehmomentsensoren ng-TTS-u



- Präzisions-Drehmomentsensoren mit sehr hoher Messauflösung
- USB-Schnittstelle
- Drehmomentfenster-Überwachung mit Signal-LED
- Mechanischer Überlastschutz MULS (bis 200 cNm Messbereich)
- Standard USB-Steckverbinder
- Wartungsfrei



Artikelnummer	Typ	Messbereich cNm	Schnittstelle	MULS	Mitnehmer
01-01-00110-01	ng-TTS50-xu	+/- 50	USB	✓	1/4" Sechskant
01-01-00111-01	ng-TTS100-xu	+/- 100	USB	✓	1/4" Sechskant
01-01-00112-01	ng-TTS200-xu	+/- 200	USB	✓	1/4" Sechskant
01-01-00113-01	ng-TTS500-xu	+/- 500	USB	-	1/4" Sechskant
01-01-00114-01	ng-TTS1000-xu	+/- 1000	USB	-	1/4" Sechskant
01-01-00115-01	ng-TTS2000-xu	+/- 2000	USB	-	1/4" Sechskant
01-01-00116-01	ng-TTS5000-qu	+/- 5000	USB	-	3/8" Vierkant



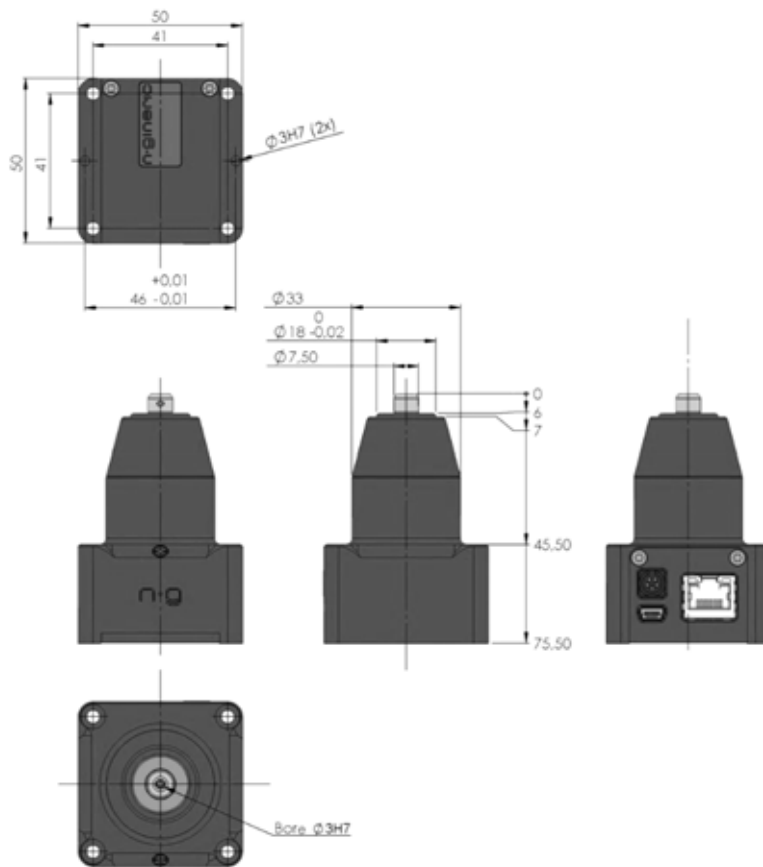
Artikelnummer	Typ	Messbereich cNm	Schnittstelle	MULS	Mitnehmer
01-01-00171-02	ng-TTS10000-qu	+/- 100	USB	-	1/2" Vierkant

Messbereich	Drehmoment-Messgenauigkeit bezogen auf den Endwert
-------------	---

+/- 1 cNm	1,0
+/- 2 cNm	0,5
+/- 5 cNm	0,2
+/- 10 cNm	0,2
+/- 20 cNm	0,2
+/- 50 cNm	0,2
+/- 1 Nm	0,2
+/- 2 Nm	0,1
+/- 5 Nm	0,1
+/- 10 Nm	0,1
+/- 20 Nm	0,1
+/- 50 Nm	0,1
+/- 100 Nm	0,1
+/- 200 Nm	0,1
+/- 500 Nm	0,1
+/- 1000 Nm	0,2

- Gebrauchstemperatur: 0°C bis 40°C

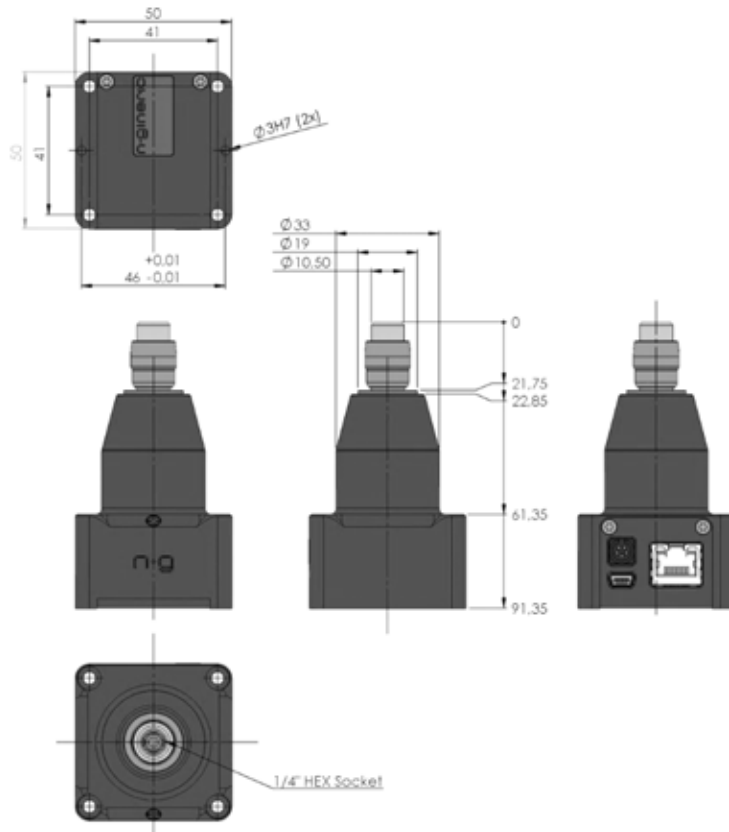
Abmessungen und Masse:



ng-TTS01-ci
ng-TTS02-ci
ng-TTS05-ci
ng-TTS10-ci
ng-TTS20-ci

ng-TTS01-cu
ng-TTS02-cu
ng-TTS05-cu
ng-TTS10-cu
ng-TTS20-cu

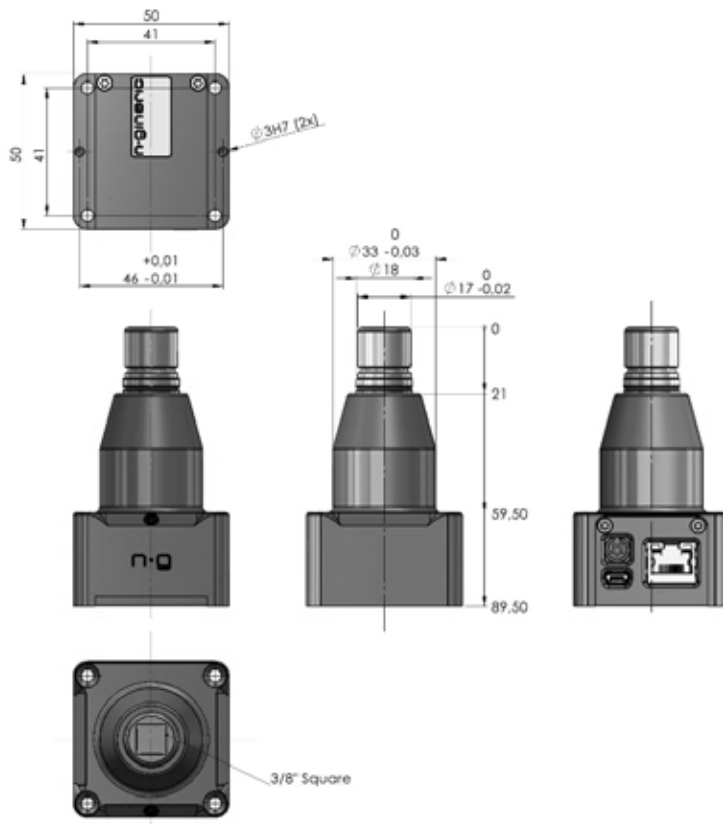
Masse: 0,22 kg



ng-TTS50-xi
 ng-TTS100-xi
 ng-TTS200-xi
 ng-TTS500-xi
 ng-TTS1000-xi
 ng-TTS2000-xi

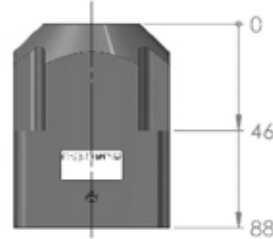
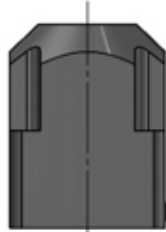
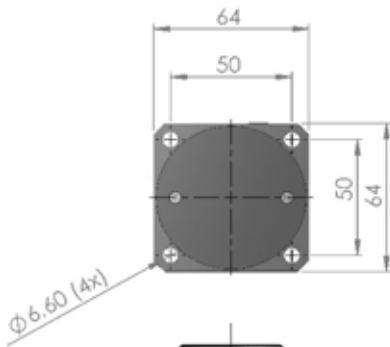
ng-TTS50-xu
 ng-TTS100-xu
 ng-TTS200-xu
 ng-TTS500-xu
 ng-TTS1000-xu
 ng-TTS2000-xu

Masse: 0,25 kg



ng-TTS5000-qj
 ng-TTS5000-qu
 ng-TTS5000-qis

Masse: 0,28 kg



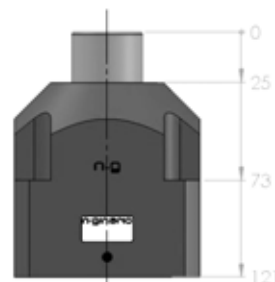
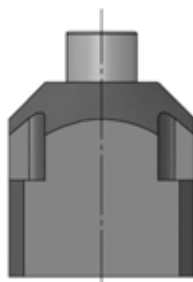
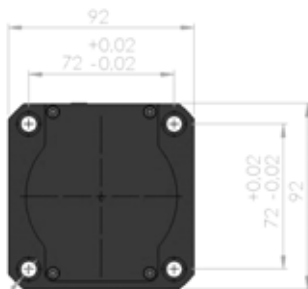
ng-TTS10000-qis
ng-TTS12000-qis
ng-TTS20000-qis

ng-TTS10000-qu

Masse: 0,77 kg

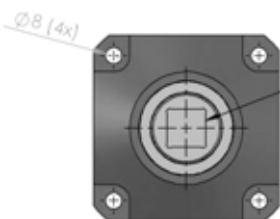


ng-TTS10000-qj2: 1/2" Square



ng-TTS50000-qi
ng-TTS50000-qis
ng-TTS75000-qi
ng-TTS75000-qis
ng-TTS100000-qi
ng-TTS100000-qis

Masse: 2,26 kg



ng-TTS10000-qi: 1/2" Square
ng-TTS20000-qi: 3/4" Square
ng-TTS50000-qi: 3/4" Square

